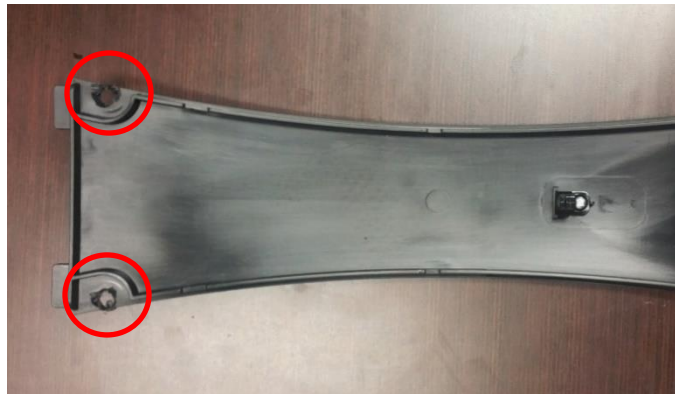


tCentric Hybrid Headrest – Installation Guide

1. Remove the back cap on the tCentric Hybrid. Instructions can be found here: <https://youtu.be/X-QNBXuk9Pk>
2. Locate the 2 marks inside the back cover and drill the headrest holes using a 5mm (3/16) drill bit.



3. Place the back cap on the chair. The holes in the back caps must align with the T-Nut on the back.



4. Install the headrest using 2 M6x35 pan head screws.

